

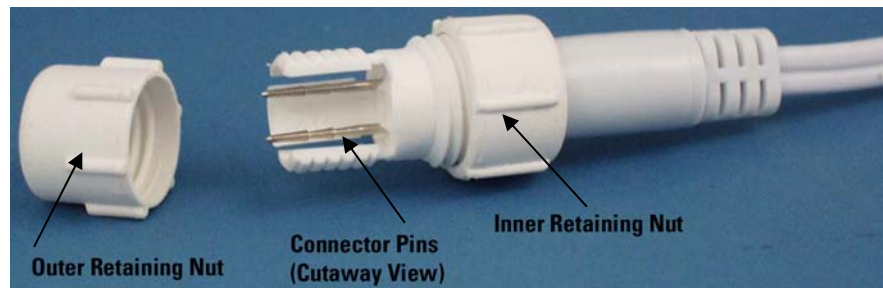
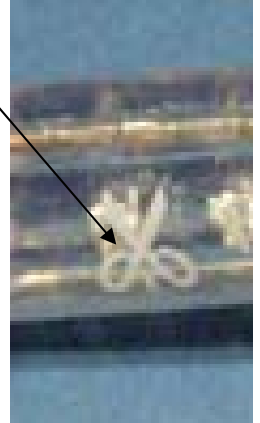
BASIC ROPE LIGHT INSTRUCTIONS

1. Cut the rope light squarely using a tube cutter or a sharp utility knife. Use the scissor marks imprinted on your rope light to determine where it is safe to cut.

The instruction sheet supplied with your order will include guidelines on the cutability of your specific type of rope light. Please follow the supplied instructions to complete your installation.

2. Bend the end of the Rope Light (2" from end) sharply to the side, which will cause one of the two wires to protrude from the cut area. Trim off this protruding wire, then bend in opposite direction and trim remaining wire.
3. Attaching the Power Cord and connector:
 - Unthread outer retaining nut and slide onto rope light end
 - Align the two connector pins on the power cord with the holes in the rope end and firmly engage
 - Slide over retaining nut back to connector and thread until securely attached
 - Firmly thread inner retaining ring

Note: Do not over tighten retaining rings



4. Attach the end cap over the exposed end of Rope Light.
5. Secure the rope light using mounting clips, conduit clips, plastic channel, or wire ties.
6. Make connection to power supply. For hard-wiring, cut off plug and strip wire ends.

CAUTION

1. Disconnect the Rope Light from Power Source before cutting or installing.
2. Cut the Rope Light only where specified in instruction #1 (above).
3. Do not mount or support Rope Light in a manner that can cut or damage the plastic insulation.
4. Rope Light is water-tight, but if used outdoors or in a damp environment, insulate all connections with silicone or silicone tape.
5. Do not cover Rope Light while in use or place in a groove. The Rope Light must be able to dissipate heat.
6. Do not use if outer plastic is damaged.

If a section of Rope Light burns out – it can be replaced with a section of equal length using splice connectors.
